

COMMUNITY HEALTH EDUCATION WORKERS (CHEWS)- SAN BERNARDINO

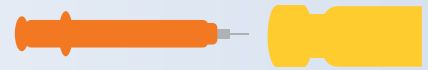
In partnership with San Bernardino City Unified School District



The Reason:



- Address chronic absenteeism.
- Support High School attendance.
- Tdap vaccination required to enroll in school.



The Strategy:



- Deployment of four community health education workers (CHEWs) to close the gap between district resources and families in need.
- Measure the social determinants of health impacting students and their families and to support the district suicide prevention efforts, making this last year a baseline for data collection and intervention.

493 Referrals made

93% Referrals completed

- 493 referrals made, with 93% referrals completed due to CHEW follow-up (self-reported). Referrals to health insurance enrollment, child/youth services, local community organizations/agencies food resources, leadership and empowerment workshops, and clinics.

The Impact:

- Strong association between community health workers/promotores interventions with families and reductions in both the number of days missed in school and the overall absenteeism rates for the most at-risk students in the district.
- Families understanding the function and how to navigate the school system.



Tdap Vaccination Support:



1,396
Phone Calls

to students who did not receive Tdap vaccinations and were at risk for delayed start to school for the 2019-2020 school year.



308 Home Visits

to provide families with information of Tdap clinics at school sites.

Sierra High School Support:

40+
Home
Visits



- Home visits conducted to 40+ families and provided support to complete applications to increase enrollment of high school seniors who were credit deficient.

Student Attendance Review Team (SART) Support:



589 early-intervention

(Tier 2) home visits with families who were on a SART list at their respective school site.

128 families

were initially screened by the CHEWs with follow-up home visits for families willing to receive resources, and provided with linkages and referrals to specific services.

360 home visits

(Tier 3) conducted for entire reporting period.

Outreach Calls to Families & Addressing Food Insecurity During Covid-19:

Due to Covid-19, the CHEWs focus shifted from home visits to conducting outreach and risk-screen calls to district families to continue to connect families to food bank resources through Loma Linda University Health's food box delivery emergency response program.



7,200
Phone Calls



2,469
Food Boxes

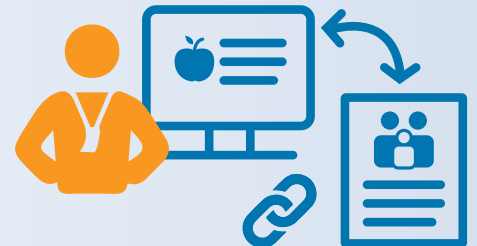
450 calls a week since March 16th, for a total of almost 7,200 calls.

2,469 food bank boxes were delivered by the collaborative team of CHEWs across the entire County of San Bernardino with 700 SBCUSD families receiving boxes.



Focus groups with parents and administrators:

- CHEWs are seen by both parents and administrators as an extension of the school district, teachers, and school administration.
- CHEWs appropriately build trust through both cultural and environmental community relationship-building and help link students and families to short-term and long-term resources.



Testimonial from focus group: "Gosh, I guess in an ideal world, there would be a [CHEW] to assign to every school, you know, then everyone would know exactly what a CHEW did or, you know, yeah but there's now six for a 50,000 student district."

Focus Group Participant." [Staff]



San Bernardino County, January 2017 – June 2020